

WILTSHIRE POLICE

CPT Area Briefing

Wiltshire South East Community Policing

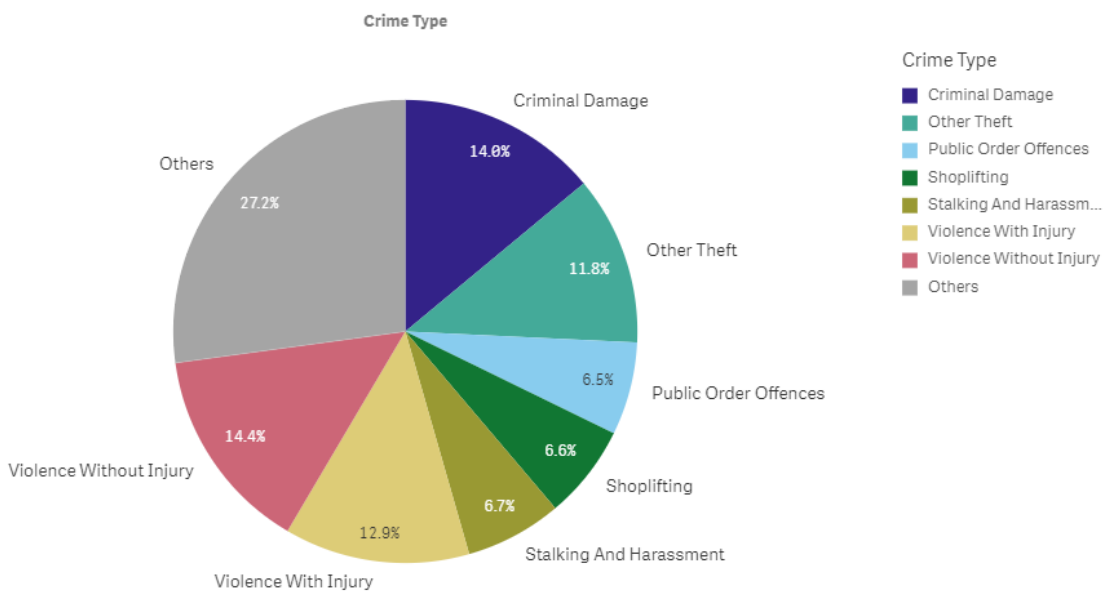


Proud to serve and protect our communities

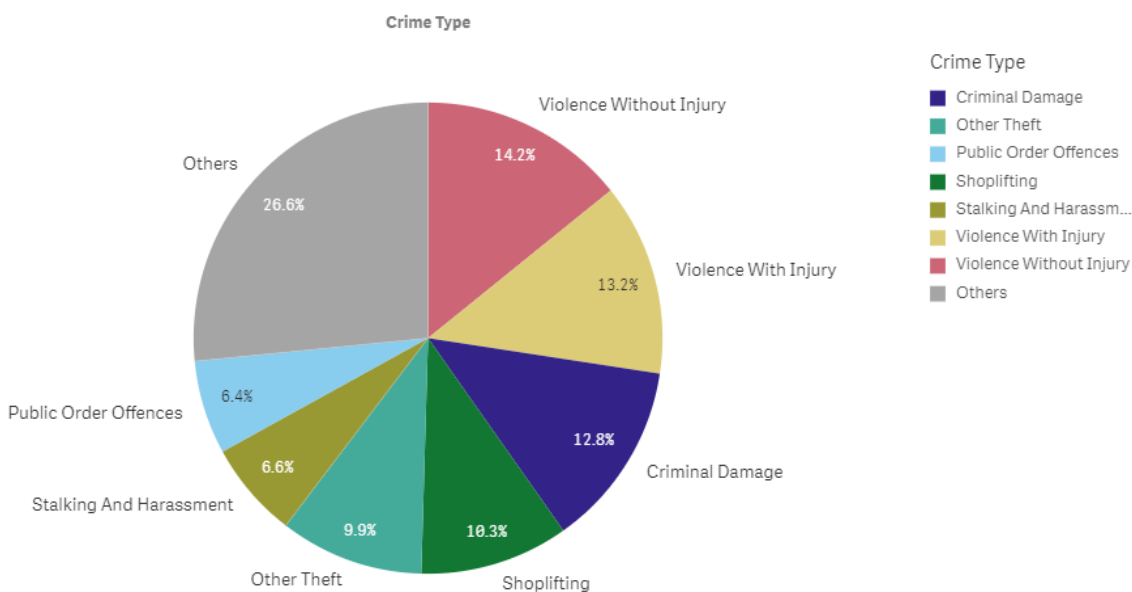
October 2019

PERFORMANCE

Your Area - Five Highest Crime Groups (Previous 12 months)



Force Area - Five Highest Crime Groups (Previous 12 months)



Wiltshire South and South East CPTs - crime and incident demand for the 12 months to September 2019

WILTSHIRE POLICE

CPT Area Briefing

Wiltshire South East Community Policing



Proud to serve and protect our communities

October 2019

Force-wide

- Wiltshire Police has had an increase in the volume of recorded crime by 1% in the 12 months to September 19 and continues to have one of the lowest crime rates in the country.
- Our service delivery remains consistently good.
- In September, we received 8,312 999 calls which we answered within 6 seconds on average and 12,474 CRIB calls which we answered within 2 minutes 08 seconds on average.
- In September, we also attended 1,344 emergency incidents within 17 minutes and 00 seconds on average.
- Wiltshire Police has seen a 17% reduction in vehicle crime and 21 per cent in residential burglaries in the 12 months to September 2019.
- The Crime Survey of England & Wales recently ranked Wiltshire as one of the top forces (78.3%) nationally for public confidence. It covers the 12 months to March 2019.
The publication can be found here: WWW.CRIMESURVEY.CO.UK

For more information on Wiltshire Police's performance please visit:

PCC's Website - <https://www.wiltshire-pcc.gov.uk/article/1847/Performance>

HMICFRS Website - <https://www.justiceinspectorates.gov.uk/hmicfrs/police-forces/wiltshire/>

Police.uk - <https://www.police.uk/wiltshire>

WILTSHIRE POLICE

CPT Area Briefing

Wiltshire South East Community Policing

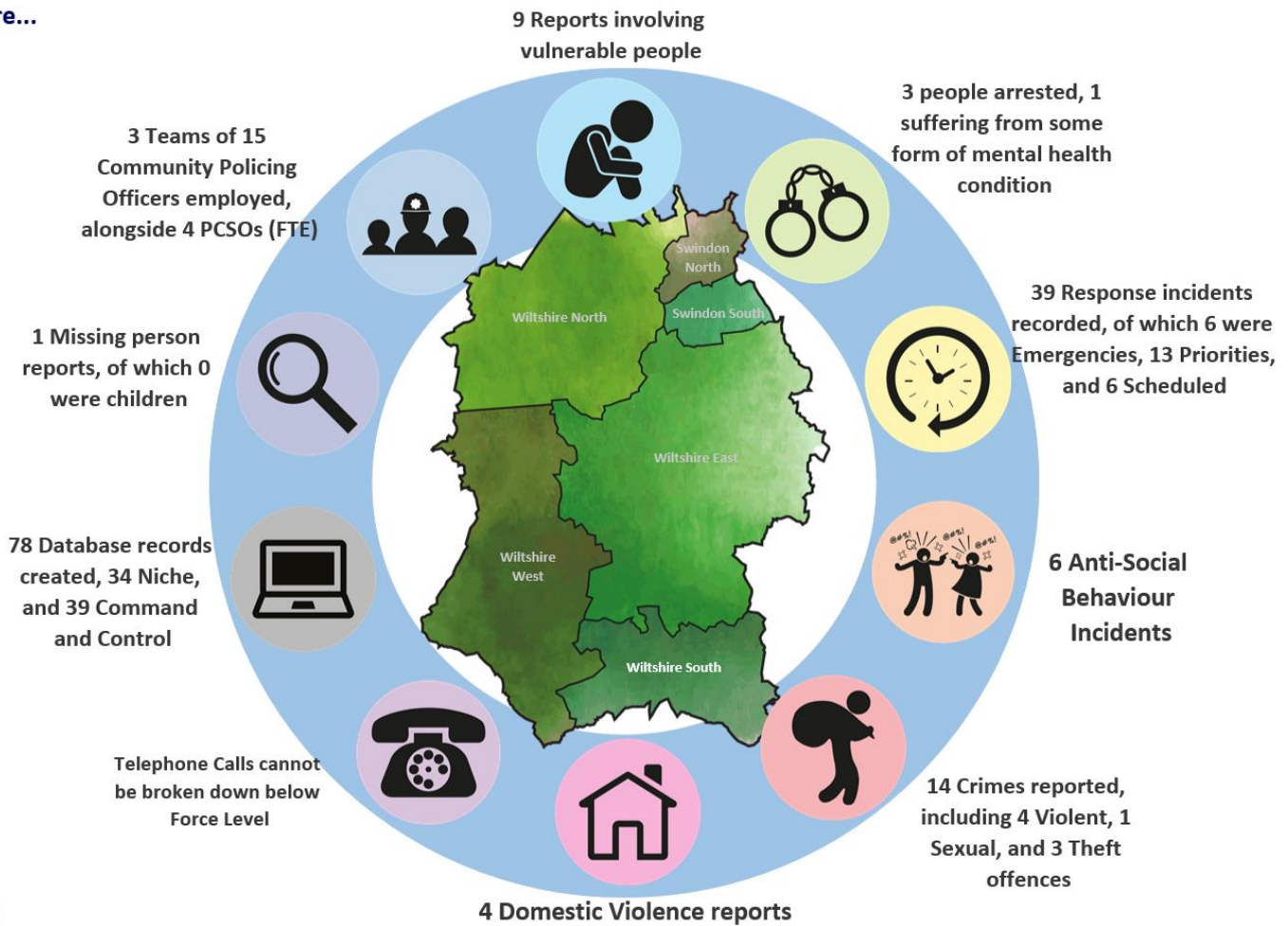


Proud to serve and protect our communities

October 2019

Area specific

On an average day in Wiltshire South there were...



Wiltshire South/ South East CPT Demand Overview – 12 months to September 2019

Recently closed down priorities

54190057957

On 9th July we commenced additional patrols to address parking issues across the Archers Gate/Kingsgate Estates. In particular around Amesbury Archer School. Words of advice have been given and will continue across the estates. The local officers were present on the first day of term. The patrol closed down on 28th September. **31** patrols were actioned. The situation will be closely monitored by the local officers.

54190076966

Following complaints of ASB at the new Great Amber Play Park, we started a patrol on 5th August.

WILTSHIRE POLICE

CPT Area Briefing

Wiltshire South East Community Policing



Proud to serve and protect our communities

October 2019

Thank fully the local issues around the park were resolved. In total **61** patrols were actioned and the patrol closed on 6th September. Local officers will continue to monitor the area.

[54190092526](#)

On 18th September we commenced patrols in Romsey Road, Amesbury. Due to complaints from the local residents of littering, vehicles causing issues and possible drug taking. 2 cannabis street warnings have been issued, along with 2 warning letters to the occupants of the vehicles in relation to driving manner and nuisance being caused. The patrol closed down on 17th October with 56 patrols

Current priorities being actioned:

[54190054752](#)

Supporting CSW continues to be a focus for the South-East Hub.

[54190093429](#)

On 15th August we commenced additional patrols in the Recreation Ground, Ludgershall. Due to complaints of drug use and littering. To date 50 patrols have taken place.

[54190092200](#)

Patrols commenced again on 17th September in the Drummer Lane area due to further complaints of anti-social behaviour. To date **95** patrols have been actioned.

WILTSHIRE POLICE

CPT Area Briefing

Wiltshire South East Community Policing



Proud to serve and protect our communities

October 2019

HIGH LEVEL CPT UPDATES:

My Deputy Lucy and I have now seen out our first summer period at Amesbury. This was a great success for us with building strong working relationships with our communities and partner agencies.

One of the highlights over the summer periods was our improvements surrounding our military liaison. We appreciated that the relationship needed to be strengthened and we are glad to report that our RMP colleagues regularly now attend our police briefings and assist us over the weekends. They are also now conducting joint patrols with us over the pay day weekends to ensure we have the appropriate people on the ground to deal with any issues that may arise in the town centre.

Garrison Commanders Jamie Balls and Nick Turner have now increased their community partnership meeting to include once a month meeting at The Beeches in Bulford on the last Monday of every month at 1400. This is in addition to the one run at Tidworth that runs on the same day between 10am and 1130.

Coming up we have the Wiltshire Police drink drive campaign, this runs from 1 December – 1st January to cover the seasonal period. We have been in discussions with the military and have decided to run joint operations with the RMP to target and deter any drink drivers. The first of these operations will commence on the weekend of 25th October.

We continue to have reports of speeding traffic in the Collingbourne Kingston area. Last week, 16th October PC Webster and PCSO Sam Flippance conducted a speeding operation in this area. This is a 30 MPH speed limit, in total NINE drivers were given suitable words of advice and ONE driver was reported for exceeding the 30 MPH speed limit due to doing a speed of 42 MPH. More of these speed checks will be conducted over the coming weeks in other areas across South East.

In September Amesbury Community Policing Team took part in a county wide and national knife crime awareness campaign - Op Sceptre.

This is a knife crime prevention initiative which brought together police forces, local authorities and education establishments among other agencies to tackle knife crime. Our most important audiences are our children and young adults, and we must find ways to raise awareness of the dangers of carrying a knife or owning an illegal weapon.

Fortunately in Amesbury, Tidworth, Ludgershall and Wiltshire as a whole, very few choose to leave the house with a knife or blade, and the reality is that those who do are more likely to be involved in a violent act or be injured.

As part of this awareness campaign we took one of our crime prevention tools, a Knife Arch (similar to an airport security arch) to local schools and talked to the students about the dangers of carrying knives.

WILTSHIRE POLICE

CPT Area Briefing

Wiltshire South East Community Policing



Proud to serve and protect our communities

October 2019

No knives were found and the Knife Arch was only present for approximately an hour. Stonehenge School and Wellington Academy.

There is not a knife crime problem at any of our local schools but education is key, and we need to be passing this on to our children that it's never OK to carry a knife.

Finally, we are very grateful to the schools which helped support our campaign.

On 27th September we arranged a coffee morning that was held with Dorset Fire and rescue held at Amesbury Fire Station.....



We continue to have reports from our rural farming community regarding hare coursing and poaching. Amesbury officers joined with Salisbury officers on Saturday 19th October and conducted an operation to focus on this. This was a great success and led to the arrest of 5 persons on suspicion of poaching offences and have been released from custody pending further investigation. We will continue to work closely with our farming communities and will be conducting more of these joint operations over the coming months and are pleased to report that on 28th October we have a new PCSO joining our team. Michael Farebrother joins us fresh from training, he will be tutored for 8 weeks before taken on joint responsibility with Tina Roylance for Amesbury rural patch.

WILTSHIRE POLICE

CPT Area Briefing

Wiltshire South East Community Policing



Proud to serve and protect our communities

October 2019

September and October in pictures.....

Community Co-ordinator PC Juliet Cox attracting the crowds for the coffee morning with Lance Corporal Jordan Matthews from RMP.



Pupils from Amesbury Primary School and smiley faces nurse enjoying the tour of the police cars at the coffee morning with PC Lucy Wileman and Corporal Ian Davies from RMP.....



WILTSHIRE POLICE

CPT Area Briefing

Wiltshire South East Community Policing



Proud to serve and protect our communities

October 2019

The whole team after a successful morning including the local fire service, our crime prevention team and police volunteers.....



Op Sceptre run at Wellington Academy and Stonehenge School...

PCSO Sam Flippance and PC Luke Hosken with Head teacher Simon Roper at Stonehenge school.



WILTSHIRE POLICE

CPT Area Briefing

Wiltshire South East Community Policing



Proud to serve and protect our communities

October 2019

PC Juliet Cox, PC Lucy Wileman and PCSO Amy Jones with head Ann Keane-maher teacher of Wellington acadamey



We are looking forward to our first seasonal period on the patch and please keep a look out for all of the team out on partol.

Liz and Lucy



Inspector Liz Coles



Sergeant Lucy Thorne

WILTSHIRE POLICE

CPT Area Briefing

Wiltshire South East Community Policing



Proud to serve and protect our communities

October 2019

Community Co-ordinators:



PC Lucy Wileman (Amesbury and Tidworth)

PC Juliet Cox (Amesbury)

PCSO's

Mark Douse & Sam Flippance - Amesbury Town



Jon Akehurst & Amy Jones – Ludgershall and Ludgershall Rural



WILTSHIRE POLICE

CPT Area Briefing

Wiltshire South East Community Policing



Proud to serve and protect our communities

October 2019

Pippa Brewer – Durrington/Bulford/Larkhill & Figheldean



Dan Catterick – Tidworth & Perham Down



PCSO Tina Roylance- Amesbury rural...coming soon to join the patch is Michael Farebrother



WILTSHIRE POLICE

CPT Area Briefing

Wiltshire South East Community Policing



Proud to serve and **protect** our communities

October 2019

Up and coming meetings and consultations

Consultations and up and coming meeting.

23rd October – Netheravon Coffee Morning – PcsO Jon Akehurst attending

15th November – Evergreen Café – PcsO Douse attending

2nd December – Amesbury Residents Committee – Insp Coles & Pc Wileman attending

Ludgershall & Tidworth NTG – Venue to be confirmed – 28th November 10.00 hours

Amesbury/Durrington/Bulford/Figheledean NTG – Amesbury Police Station – 2nd December 18.30 hours

Amesbury Rural NTG – Amesbury Police Station - To be agreed

You can find out more about Wiltshire South East CPT, including news stories and contacts for local officers, on our website: <https://www.wiltshire.police.uk/WiltshireSouthEast>

WILTSHIRE POLICE

CPT Area Briefing

Wiltshire South East Community Policing



Proud to serve and protect our communities

October 2019

LOCAL PRIORITIES

PRIORITIES FOR WILTSHIRE SOUTH EAST CPT	UPDATE
Priority 1:	
Speeding South East CPT- Set date: End November 2019	Local's officers continue to engage with community speed watch and have planned speeding operations across the hub over the next month.
Priority 2:	
Rural Crime Set end date: End December 2019	Continue to strengthen our relationship and response to incidents of rural crime by conducting further targeted patrols across our area.
Priority 3:	
Visibility- Set end date: End of December 2019	Pulse patrols which focuses on any increase or potential increase in crime. Pulse patrols involves several officers all on foot patrol in particular areas. Over the seasonal period this will focus on purse thefts, unattended homes during the seasonal period and a potential increase in night time economy with an increase in functions.
Priority 4:	
Drink Driving- Set end date: 1 st January 2019	From 1 st December- 1 st January Wiltshire police run a drink drive campaign over the seasonal period. South East CPT are commencing these patrols early and have planned joint operations with the royal military police starting at the end of October.

WILTSHIRE POLICE

CPT Area Briefing

Wiltshire South East Community Policing



Proud to serve and protect our communities

October 2019

HIGH LEVEL PCC UPDATES

- **Recruitment** - Police officer recruitment continues with more than 500 applications received so far since the campaign launched on 23 September. Wiltshire Police is accepting applications until Sunday 13 October.
- **Community work** - In September PCC Angus Macpherson awarded a total of £22,500 from the Police Property Act to projects across the county which make a difference in their communities. Beneficiaries include a drop-in service for homeless people, a 12-week personal development course for unemployed young people and a pilot project using photography to engage with young people at risk of offending or exploitation. Full details are available on our website.
- **Herbert Protocol** – The PCC was proud to join Wiltshire Police, Swindon Borough Council, healthcare partners, Swindon Carers Centre and the Alzheimer's Society at the launch of the Herbert Protocol last month. It comprises of a document in which carers, family and friends of vulnerable adults can fill out key details about the individual as a pre-emptive measure in case they later go missing. This will enable the police to start their initial enquiries sooner with the aim of finding the missing person safe and well.

HIGH LEVEL FORCE UPDATES

- **County Lines** – The issue of gangs transporting Class A drugs from major cities such as London and Manchester into rural counties, is one which is attracting significant media attention. Here in Wiltshire we are raising awareness of the problem, and specifically the impact these crimes have on the wider community, as they are often linked to modern slavery and organised crime, with children and vulnerable adults being exploited. Please look out for local media coverage, or go to our website for more information.
- **Domestic abuse** – This month we are highlighting the work Wiltshire Police is doing to tackle domestic abuse, including educating the public about the support that is available for victims. This campaign will include a young mother, who has been the victim of domestic violence, speaking out about her story in the hope that she can encourage other victims to come forward and get support.
- **Rural crime** - During the beginning of October we are taking part in a national week of action targeting rural crime. Our work will include providing crime prevention advice and encouraging residents to report all incidents to the police, as well as having our Community Policing Teams and the Rural Crime Team out and about engaging with our rural communities.

WILTSHIRE POLICE

CPT Area Briefing

Wiltshire South East Community Policing



Proud to serve and **protect** our communities

October 2019

GET INVOLVED

- You can keep up to date with the latest news in your area by signing up to our Community Messaging service – www.wiltsmessaging.co.uk
- You can follow your CPT on social media <https://www.wiltshire.police.uk/Followus>
- More information on your CPT area can be found here: www.wiltshire.police.uk and here www.wiltshire-pcc.gov.uk

FEEDBACK/ACTIONS TAKEN